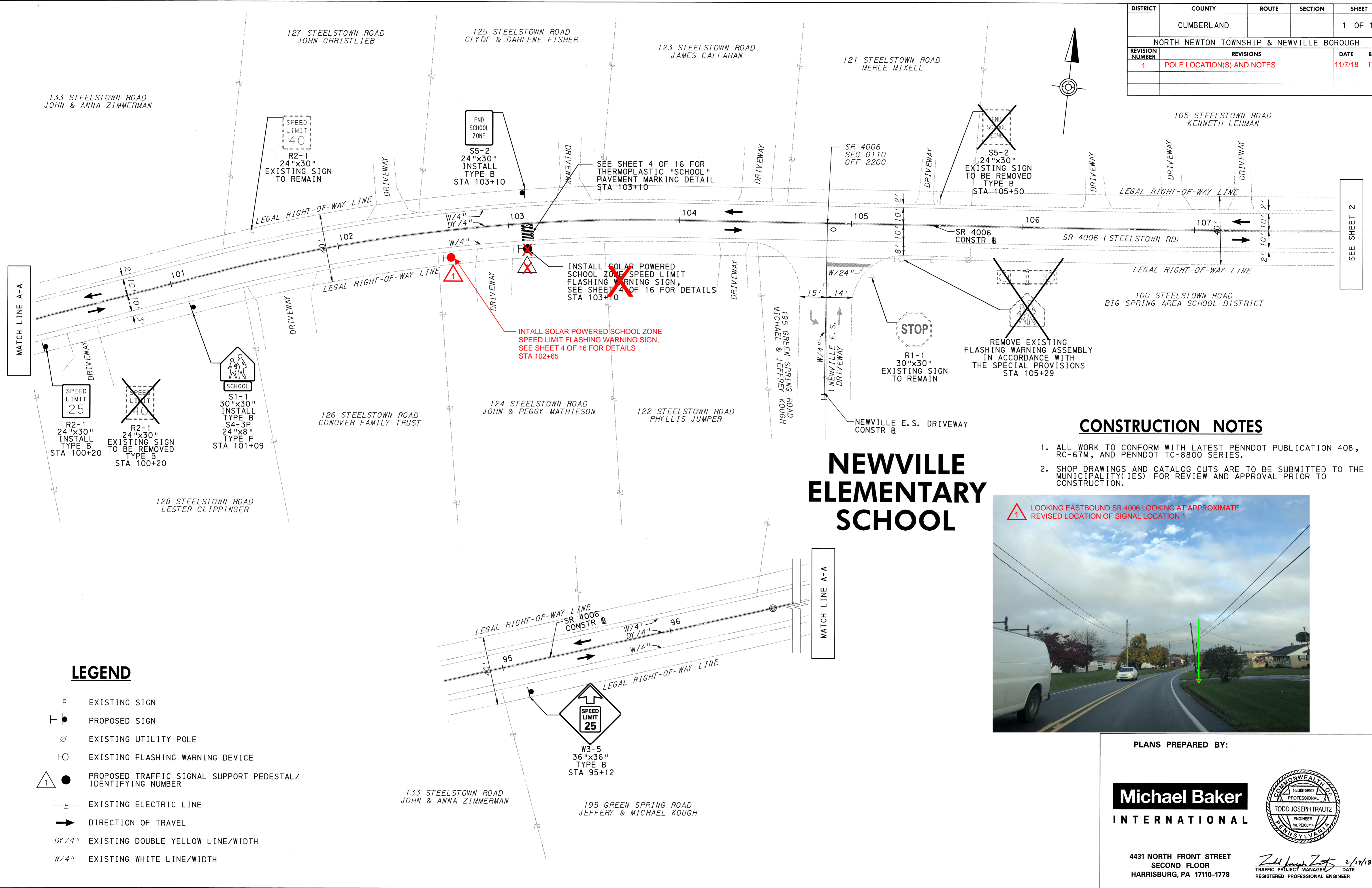


DISTRICT	CUMBERLAND	ROUTE	SECTION	SHEET
				1 OF 16
NORTH NEWTON TOWNSHIP & NEWVILLE BOROUGH				
REVISION NUMBER	REVISIONS			DATE
1	POLE LOCATION(S) AND NOTES			11/7/18
				TJT



NEWVILLE ELEMENTARY SCHOOL

CONSTRUCTION NOTES

1. ALL WORK TO CONFORM WITH LATEST PENNDOT PUBLICATION 408, RC-67M, AND PENNDOT TC-8800 SERIES.
2. SHOP DRAWINGS AND CATALOG CUTS ARE TO BE SUBMITTED TO THE MUNICIPALITY(IES) FOR REVIEW AND APPROVAL PRIOR TO CONSTRUCTION.



LOOKING EASTBOUND SR 4006 LOOKING AT APPROXIMATE REVISED LOCATION OF SIGNAL LOCATION 1

LEGEND

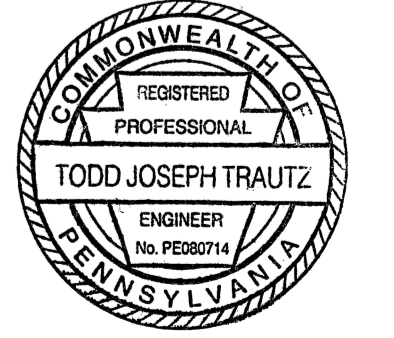
- EXISTING SIGN
- PROPOSED SIGN
- EXISTING UTILITY POLE
- EXISTING FLASHING WARNING DEVICE
- PROPOSED TRAFFIC SIGNAL SUPPORT PEDESTAL/IDENTIFYING NUMBER
- EXISTING ELECTRIC LINE
- DIRECTION OF TRAVEL
- EXISTING DOUBLE YELLOW LINE/WIDTH
- EXISTING WHITE LINE/WIDTH

SEE SHEET 2

A:\Drawings\ATUEB\BTA_Corridor\Sheet\1811\1811_Traffic_Signals_Plan\Newville_Elementary.dwg 10-EEB-2018 14-20

PLANS PREPARED BY:

**Michael Baker
INTERNATIONAL**



4431 NORTH FRONT STREET
SECOND FLOOR
HARRISBURG, PA 17110-1778

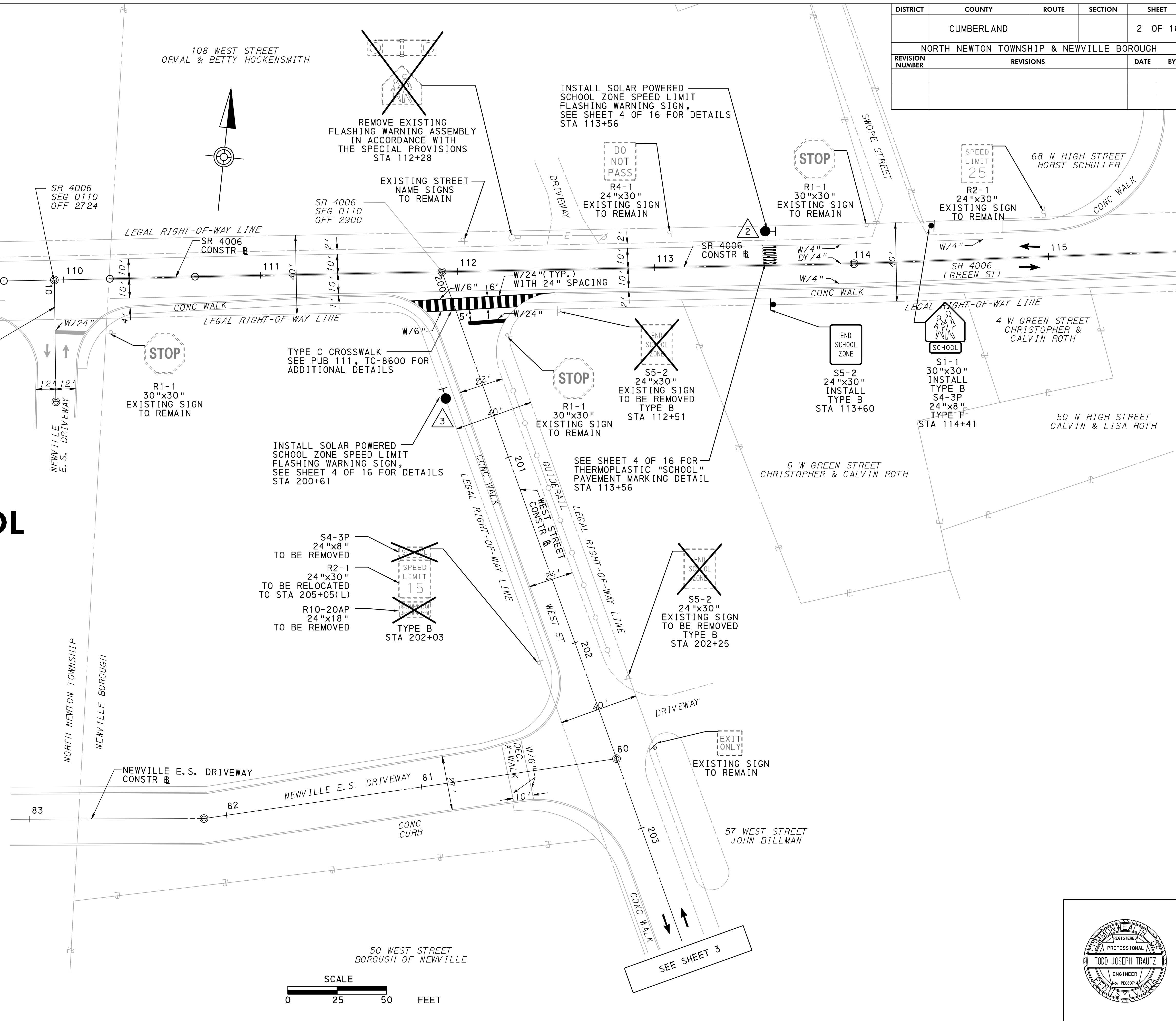
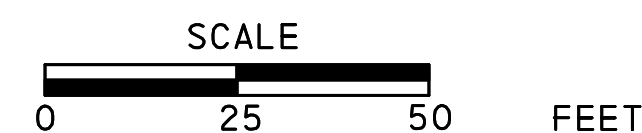
Todd Joseph Trautz 2/19/18
TRAFFIC PROJECT MANAGER DATE
REGISTERED PROFESSIONAL ENGINEER

DISTRICT	COUNTY	ROUTE	SECTION	SHEET
	CUMBERLAND			2 OF 16
NORTH NEWTON TOWNSHIP & NEWVILLE BOROUGH				
REVISION NUMBER	REVISIONS	DATE	BY	

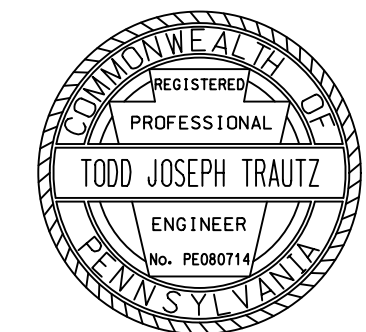
NEWVILLE ELEMENTARY SCHOOL

LEGEND

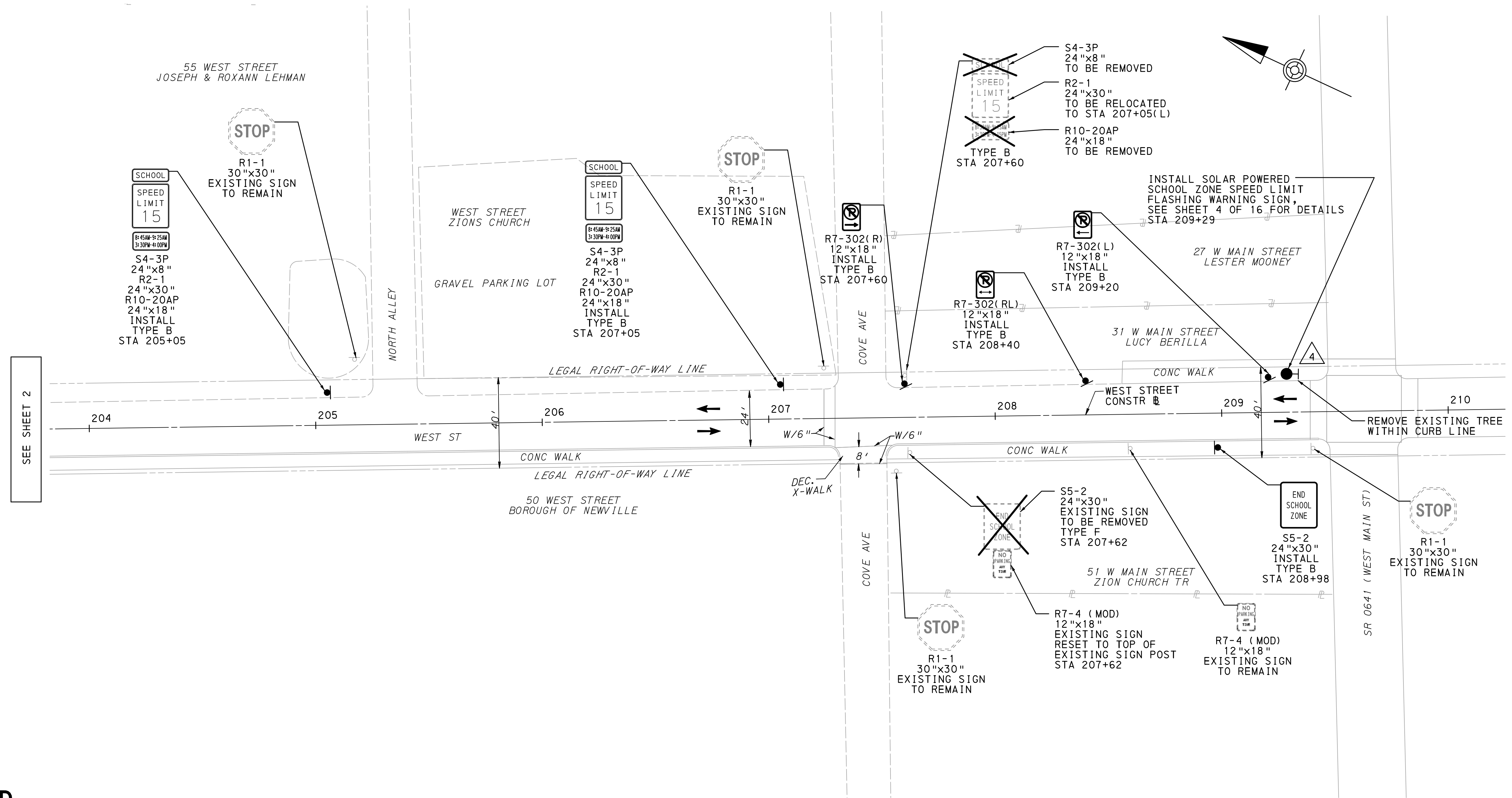
- ⬮ EXISTING SIGN
- ⊕ PROPOSED SIGN
- ⊗ EXISTING UTILITY POLE
- ⊖ EXISTING FLASHING WARNING DEVICE
- ⚙️ PROPOSED TRAFFIC SIGNAL SUPPORT PEDESTAL / IDENTIFYING NUMBER
- E— EXISTING ELECTRIC LINE
- ➔ DIRECTION OF TRAVEL
- DY / 4" EXISTING DOUBLE YELLOW LINE / WIDTH
- W / 4" EXISTING WHITE LINE / WIDTH
- W / 6" PROPOSED WHITE LINE / WIDTH



C:\Projects\01HER\B\lg_Spring_School_District\200_Deliverables\Traffic\Traffic_Signals_Construction_Plan\01_02_Newville_Elementary.dgn
 19-FEB-2018 14:20

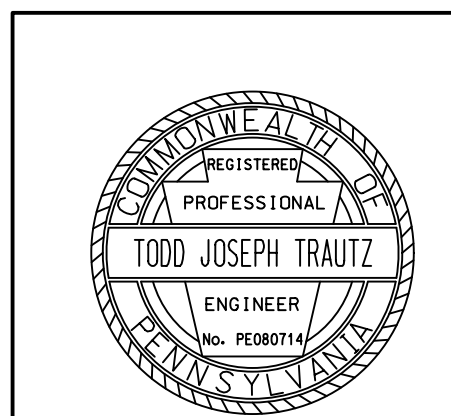
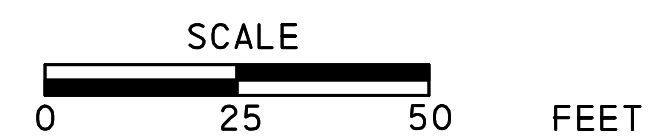


DISTRICT	COUNTY	ROUTE	SECTION	SHEET
	CUMBERLAND			3 OF 16
NORTH NEWTON TOWNSHIP & NEWVILLE BOROUGH				
REVISION NUMBER	REVISIONS	DATE	BY	



LEGEND

- EXISTING SIGN
- PROPOSED SIGN
- PROPOSED TRAFFIC SIGNAL SUPPORT PEDESTAL/ IDENTIFYING NUMBER
- DIRECTION OF TRAVEL
-



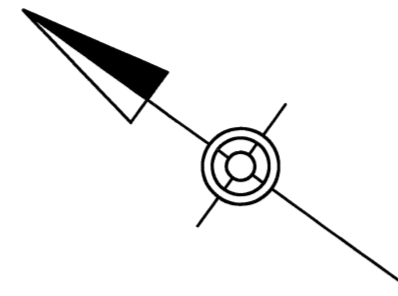
G:\Projects\01HER\B1g_Spring_School_District\200_Deliverables\Traffic\Traffic_Signals_Construction_Plan\01_03_Newville_Elementary.dgn
 19-FEB-2018 14:20

CONSTRUCTION NOTES

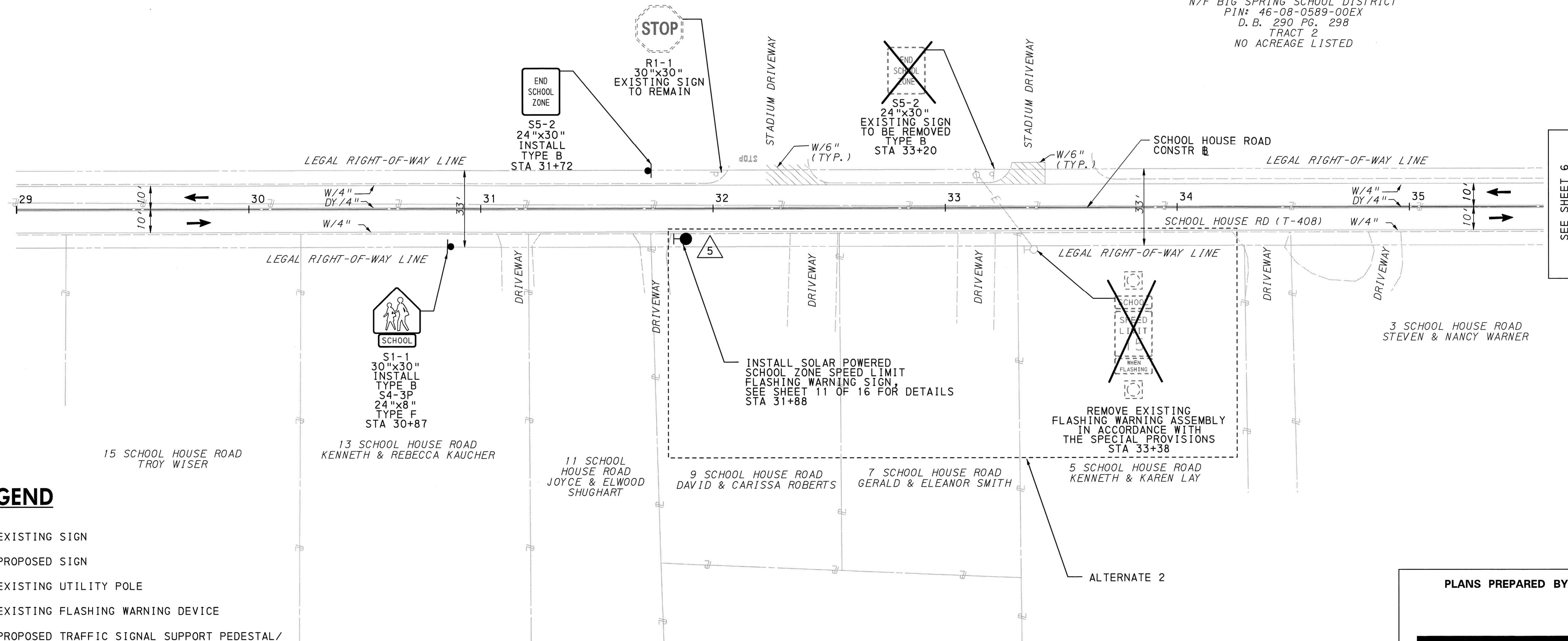
1. ALL WORK TO CONFORM WITH LATEST PENNDOT PUBLICATION 408, RC-67M, AND PENNDOT TC-8800 SERIES.
2. SHOP DRAWINGS AND CATALOG CUTS ARE TO BE SUBMITTED TO THE MUNICIPALITY(IES) FOR REVIEW AND APPROVAL PRIOR TO CONSTRUCTION.
3. SEE CONSTRUCTION PLANS FOR UTILITY LOCATIONS

DISTRICT	COUNTY	ROUTE	SECTION	SHEET
	CUMBERLAND			5 OF 16
WEST PENNSBORO TOWNSHIP				
REVISION NUMBER	REVISIONS	DATE	BY	

BIG SPRING MIDDLE SCHOOL



45 MOUNT ROCK ROAD
 BIG SPRING SCHOOL DISTRICT
 N/F BIG SPRING SCHOOL DISTRICT
 PIN# 46-08-0589-00EX
 D. B. 290 PG. 298
 TRACT 2
 NO ACREAGE LISTED

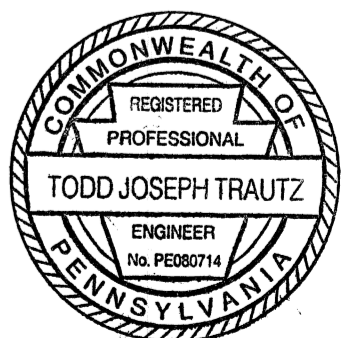


LEGEND

- ⊥ EXISTING SIGN
- ⊥• PROPOSED SIGN
- ⊕ EXISTING UTILITY POLE
- ⊖ EXISTING FLASHING WARNING DEVICE
- △• PROPOSED TRAFFIC SIGNAL SUPPORT PEDESTAL/ IDENTIFYING NUMBER
- E— EXISTING ELECTRIC LINE
- ➔ DIRECTION OF TRAVEL
- DY/4" EXISTING DOUBLE YELLOW LINE/WIDTH
- W/4" EXISTING WHITE LINE/WIDTH

PLANS PREPARED BY:

Michael Baker
 INTERNATIONAL



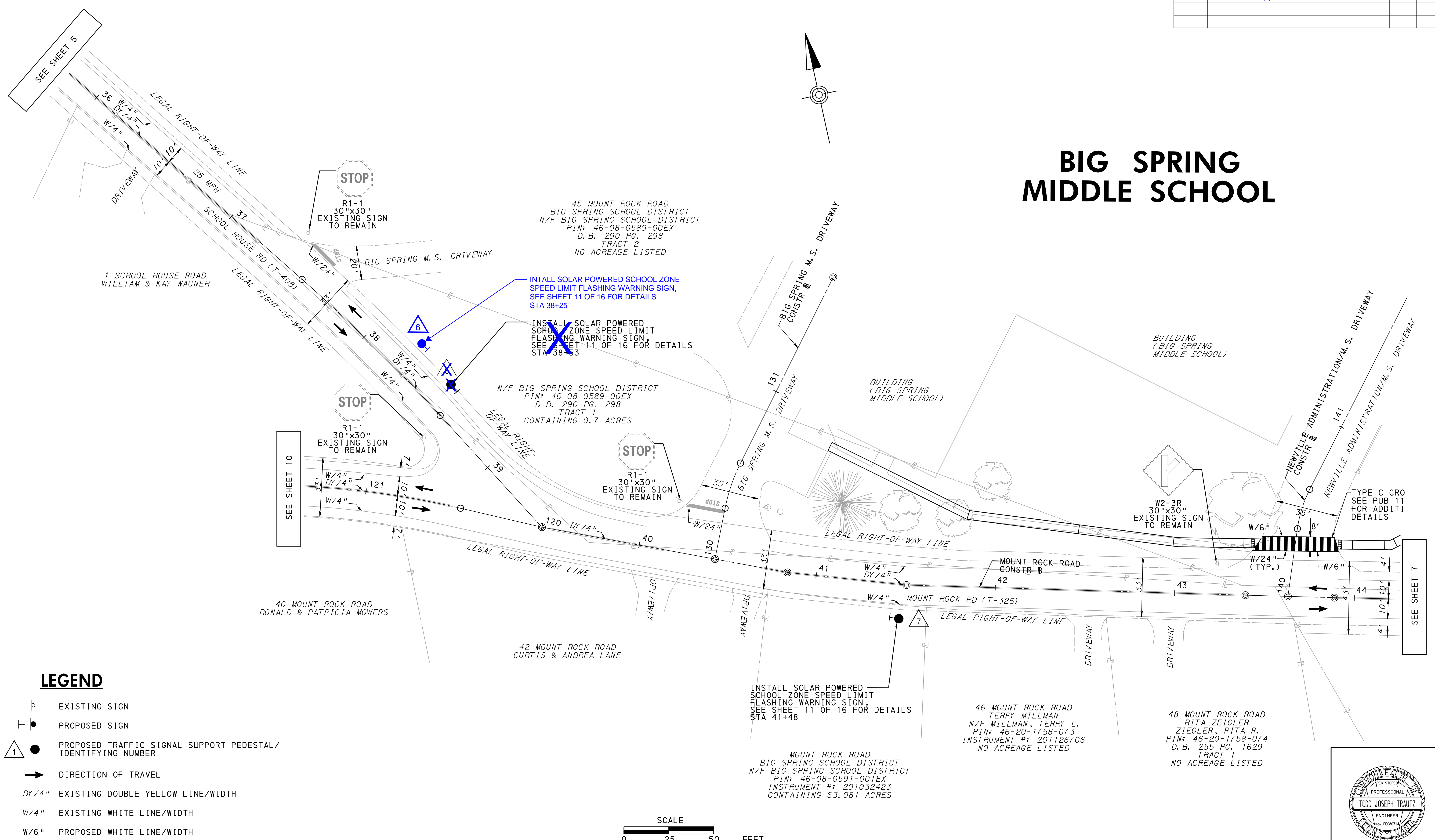
4431 NORTH FRONT STREET
 SECOND FLOOR
 HARRISBURG, PA 17110-1778

Trautz
 TRAFFIC PROJECT MANAGER DATE 2/19/18
 REGISTERED PROFESSIONAL ENGINEER

10-LEB-2018 14-20

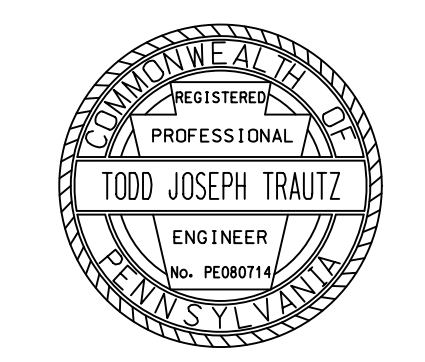
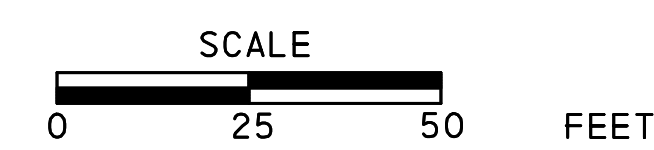
DISTRICT	COUNTY	ROUTE	SECTION	SHEET	
	CUMBERLAND			6 OF 16	
WEST PENNSBORO TOWNSHIP					
REVISION NUMBER	REVISIONS			DATE	BY
2	POLE LOCATION(S) AND NOTES			11/12/18	TJT

BIG SPRING MIDDLE SCHOOL



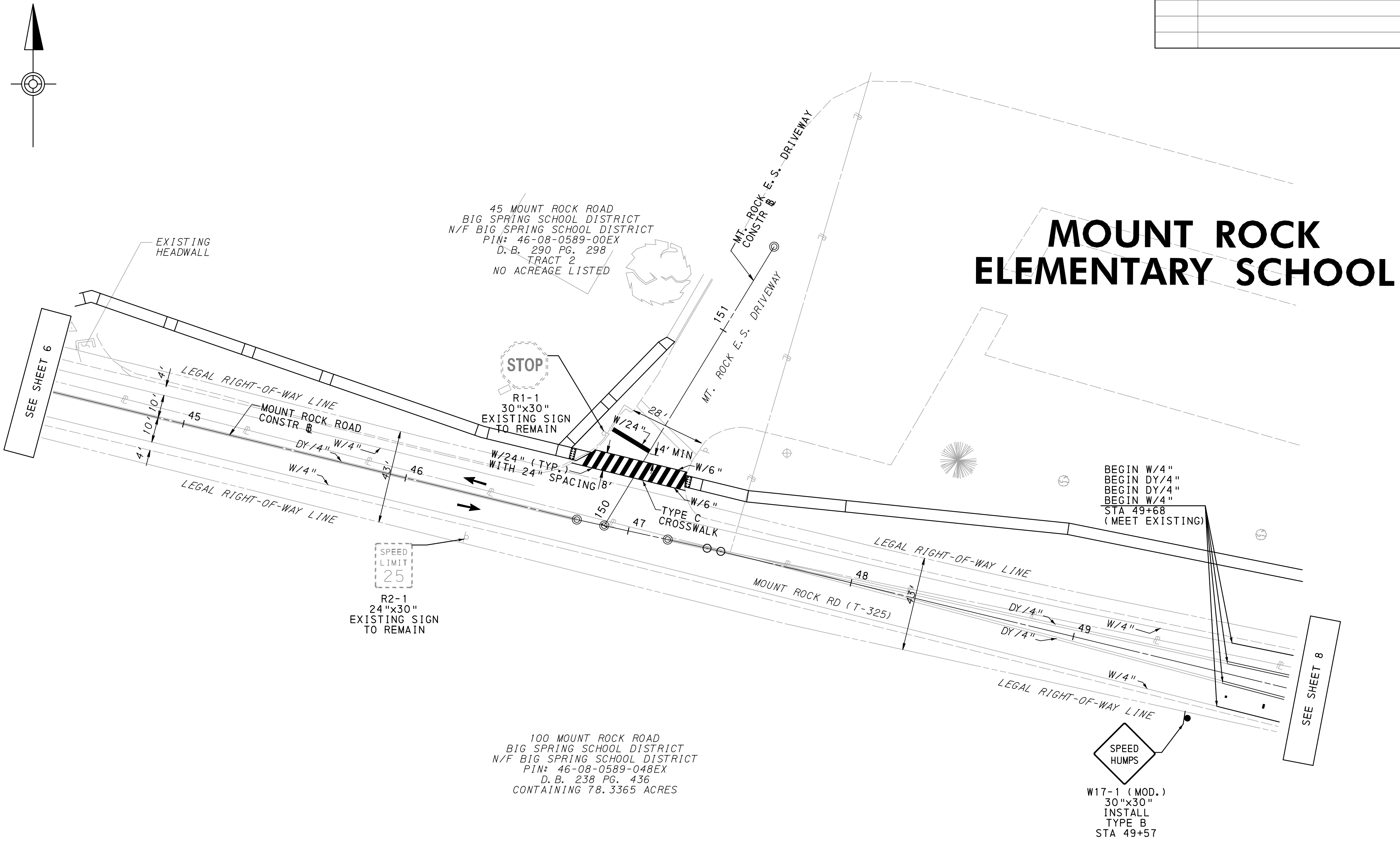
LEGEND

- EXISTING SIGN
- PROPOSED SIGN
- PROPOSED TRAFFIC SIGNAL SUPPORT PEDESTAL / IDENTIFYING NUMBER
- DIRECTION OF TRAVEL
- EXISTING DOUBLE YELLOW LINE/WIDTH
- EXISTING WHITE LINE/WIDTH
- PROPOSED WHITE LINE/WIDTH



19-FEB-2018 14:20
 Q:\Projects\01HER\Big Spring School District\Traffic\Traffic\Traffic Signal Construction Plan\02_06_Big Spring HS.dgn

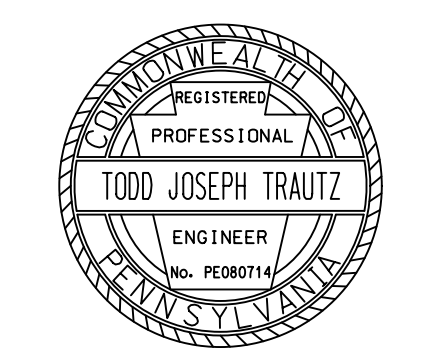
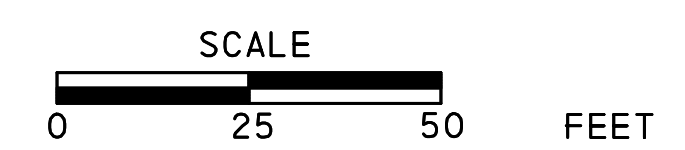
DISTRICT	COUNTY	ROUTE	SECTION	SHEET
	CUMBERLAND			7 OF 16
WEST PENNSBORO TOWNSHIP				
REVISION NUMBER	REVISIONS	DATE	BY	



MOUNT ROCK ELEMENTARY SCHOOL

LEGEND

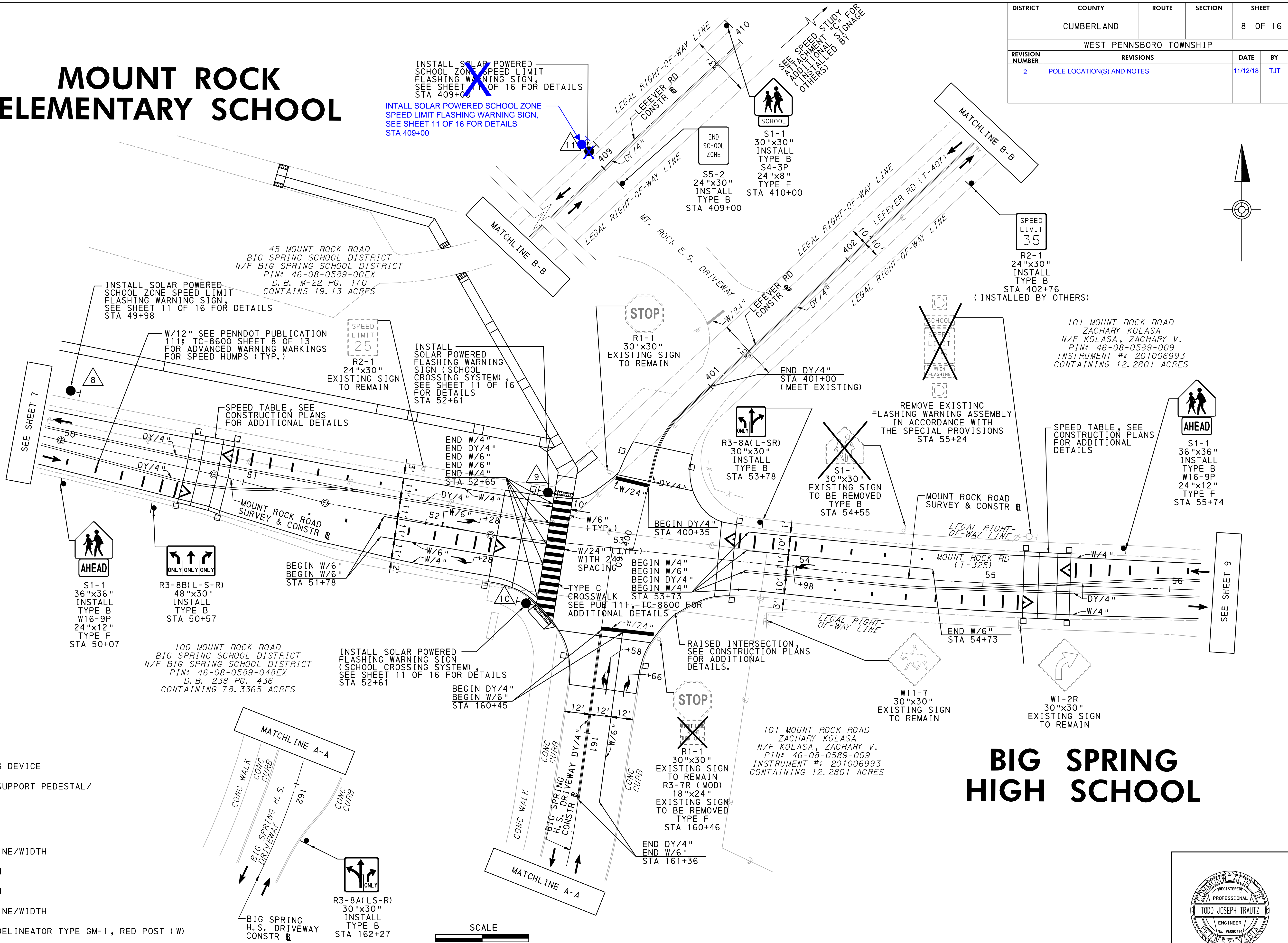
- ⊖ EXISTING SIGN
- ⊕ PROPOSED SIGN
- ➔ DIRECTION OF TRAVEL
- DY/4" EXISTING DOUBLE YELLOW LINE/WIDTH
- W/4" EXISTING WHITE LINE/WIDTH
- W/4" PROPOSED WHITE LINE/WIDTH
- DY/4" PROPOSED DOUBLE YELLOW LINE/WIDTH



G:\Projects\01HER\Big Spring School District\Traffic\Traffic Signal Construction Plan\02_07_Big Spring HS.dgn
 19-FEB-2018 14:21

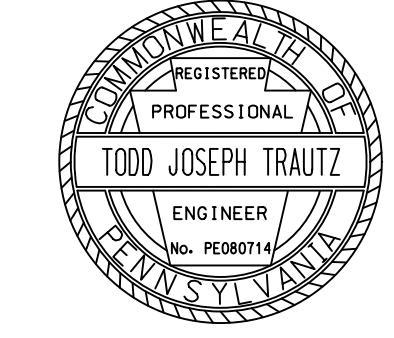
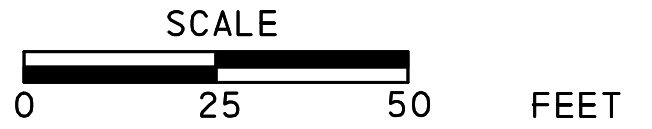
MOUNT ROCK ELEMENTARY SCHOOL

DISTRICT	COUNTY	ROUTE	SECTION	SHEET	
	CUMBERLAND			8 OF 16	
WEST PENNSBORO TOWNSHIP					
REVISION NUMBER	REVISIONS			DATE	BY
2	POLE LOCATION(S) AND NOTES			11/12/18	TJT



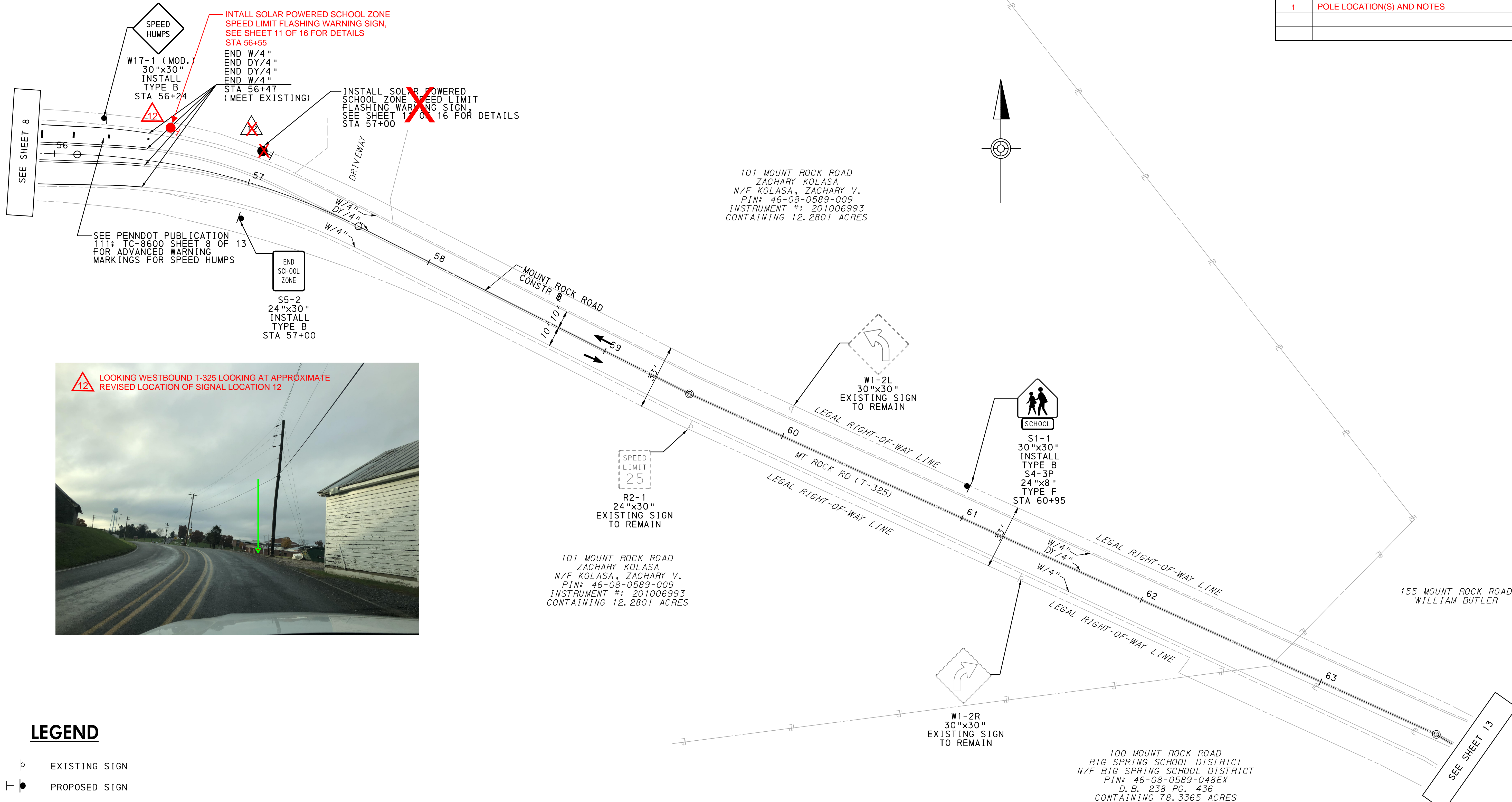
LEGEND

- EXISTING SIGN
- PROPOSED SIGN
- EXISTING UTILITY POLE
- EXISTING FLASHING WARNING DEVICE
- PROPOSED TRAFFIC SIGNAL SUPPORT PEDESTAL/ IDENTIFYING NUMBER
- EXISTING ELECTRIC LINE
- DIRECTION OF TRAVEL
- EXISTING DOUBLE YELLOW LINE/WIDTH
- EXISTING WHITE LINE/WIDTH
- EXISTING WHITE LINE/WIDTH
- PROPOSED DOUBLE YELLOW LINE/WIDTH
- PROPOSED GROUND MOUNTED DELINEATOR TYPE GM-1, RED POST (W)



19-FEB-2018 14:21
 g:\Projects\01HER\Big Spring School - District\Traffic\Signal Construction\Plan\02-08-16_Big Spring HS.dgn

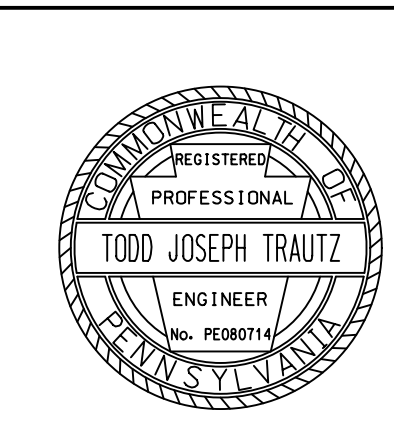
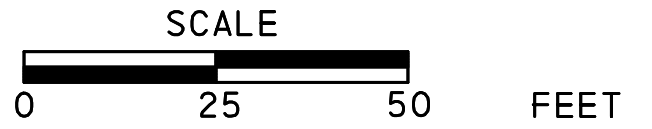
DISTRICT	COUNTY	ROUTE	SECTION	SHEET
	CUMBERLAND			9 OF 16
WEST PENNSBORO TOWNSHIP				
REVISION NUMBER	REVISIONS	DATE	BY	
1	POLE LOCATION(S) AND NOTES	11/7/18	TJT	



12 LOOKING WESTBOUND T-325 LOOKING AT APPROXIMATE REVISED LOCATION OF SIGNAL LOCATION 12

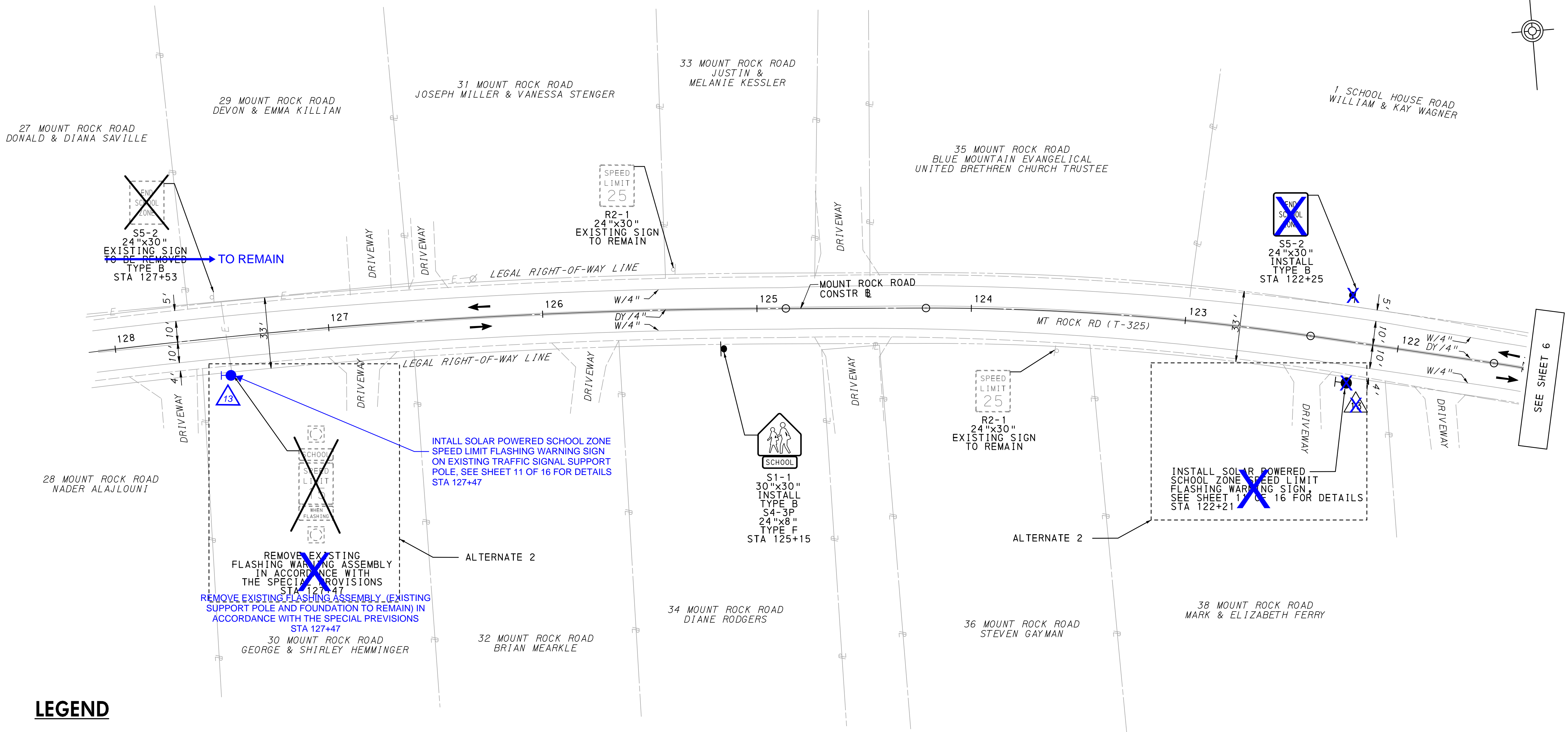
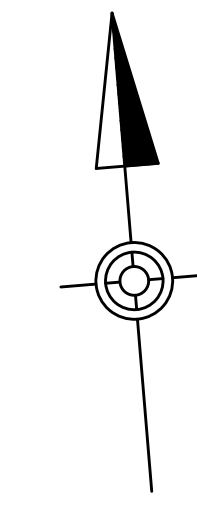
LEGEND

- EXISTING SIGN
- PROPOSED SIGN
- PROPOSED TRAFFIC SIGNAL SUPPORT PEDESTAL/ IDENTIFYING NUMBER
- DIRECTION OF TRAVEL
- DY/4"* EXISTING DOUBLE YELLOW LINE/WIDTH
- W/4"* EXISTING WHITE LINE/WIDTH
- W/4"** PROPOSED WHITE LINE/WIDTH
- DY/4"** PROPOSED DOUBLE YELLOW LINE/WIDTH



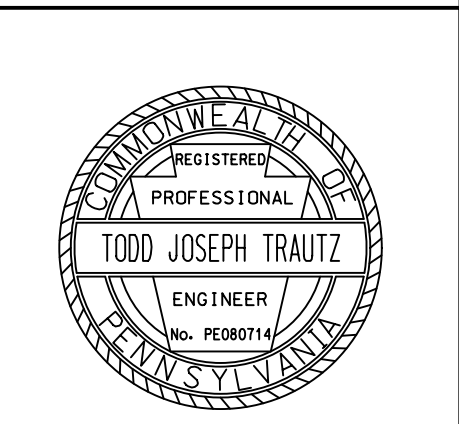
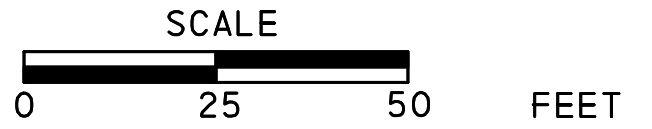
G:\Projects\01HER\Big Spring School District\Traffic\Traffic Signal Construction Plan\02_09_Big Spring HS.dgn
 19-FEB-2018 14:21

DISTRICT	COUNTY	ROUTE	SECTION	SHEET	
	CUMBERLAND			10 OF 16	
WEST PENNSBORO TOWNSHIP					
REVISION NUMBER	REVISIONS			DATE	BY
2	POLE LOCATION(S) AND NOTES			11/12/18	TJT



LEGEND

- EXISTING SIGN
- PROPOSED SIGN
- PROPOSED TRAFFIC SIGNAL SUPPORT PEDESTAL/
IDENTIFYING NUMBER
- DIRECTION OF TRAVEL
- DY/4" EXISTING DOUBLE YELLOW LINE/WIDTH
- W/4" EXISTING WHITE LINE/WIDTH



G:\Projects\01HER\Big Spring School District\200 Deliverables\Traffic\Traffic Signal Construction Plan\02_10.Big Spring HS.dgn 19-FEB-2018 14:21

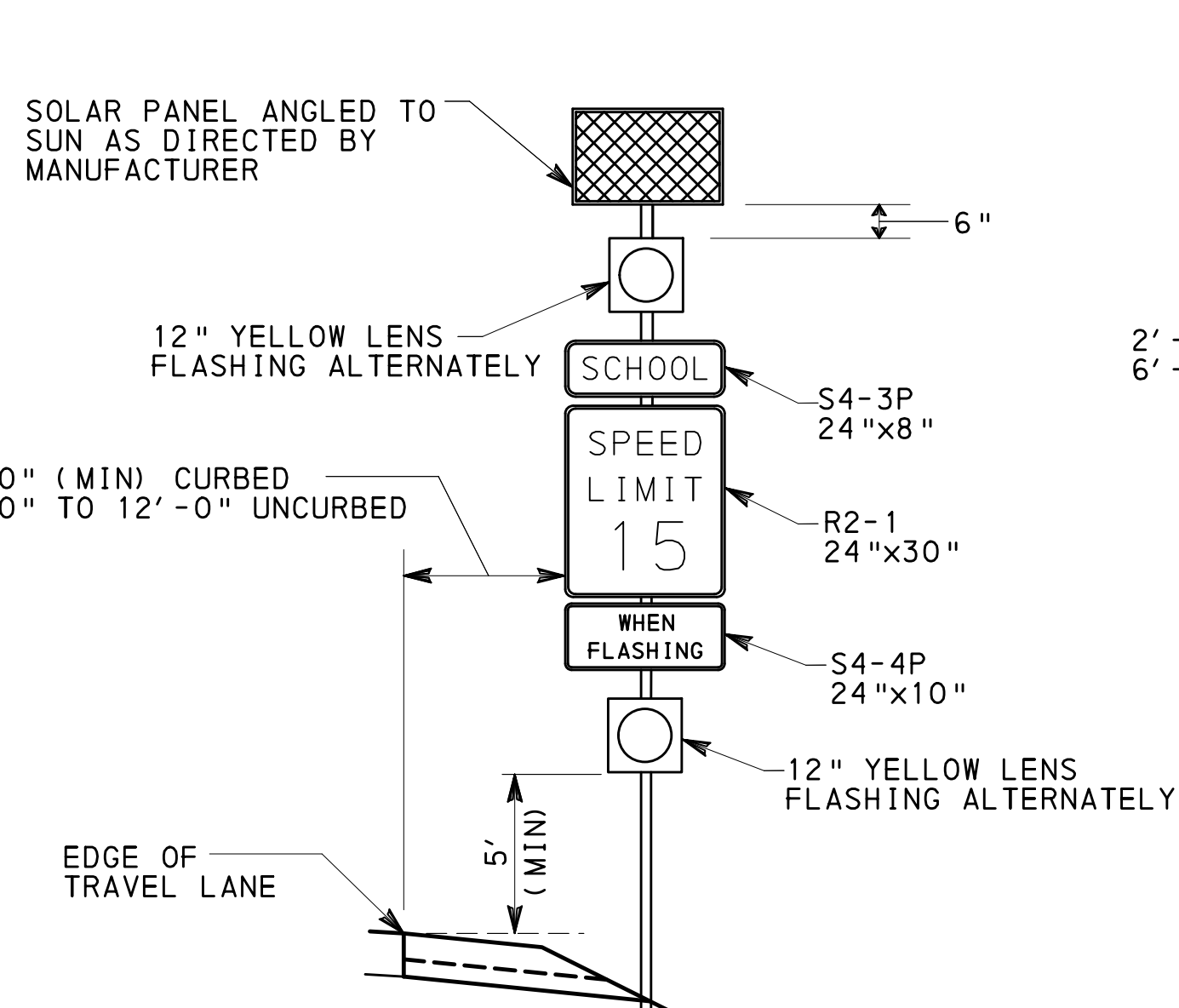
TRAFFIC SIGNAL SUPPORTS

STRUCTURE NO.	ITEM NO.	DESCRIPTION	QUANTITY	ROUTE	STATION	SIDE	OFFSET	PEDESTAL			REMARKS
								SHAFT		SIGNALS	
								H	M		
5	0951 4014 EACH	TRAFFIC SIGNAL SUPPORT, 14' PEDESTAL	1	SCHOOL HOUSE RD	31+88	RT	*	14'	*	N/A	ALTERNATE 2
6	0951 4014 EACH	TRAFFIC SIGNAL SUPPORT, 14' PEDESTAL	1	SCHOOL HOUSE RD	38+25 38+53	LT	*	14'	*	N/A	
7	0951 4014 EACH	TRAFFIC SIGNAL SUPPORT, 14' PEDESTAL	1	MT ROCK RD	41+48	RT	*	14'	*	N/A	
8	0951 4014 EACH	TRAFFIC SIGNAL SUPPORT, 14' PEDESTAL	1	MT ROCK RD	49+98	LT	*	14'	*	N/A	
9	0951 4014 EACH	TRAFFIC SIGNAL SUPPORT, 14' PEDESTAL	1	MT ROCK RD	52+61	LT	**	14'	**	N/A	
10	0951 4014 EACH	TRAFFIC SIGNAL SUPPORT, 14' PEDESTAL	1	MT ROCK RD	52+61	RT	**	14'	**	N/A	
11	0951 4014 EACH	TRAFFIC SIGNAL SUPPORT, 14' PEDESTAL	1	LEFEVER RD	409+00	LT	*	14'	*	N/A	
12	0951 4014 EACH	TRAFFIC SIGNAL SUPPORT, 14' PEDESTAL	1	MT ROCK RD	56+55 57+00	LT	*	14'	*	N/A	
13	0951 4014 EACH	TRAFFIC SIGNAL SUPPORT, 14' PEDESTAL	1	MT ROCK RD	122+21	LT	*	14'	*	N/A	ALTERNATE 2

* - SEE SCHOOL ZONE SPEED LIMIT FLASHING WARNING SIGN DETAIL
 ** - SEE FLASHING WARNING SIGN (SCHOOL CROSSING SYSTEM) DETAIL

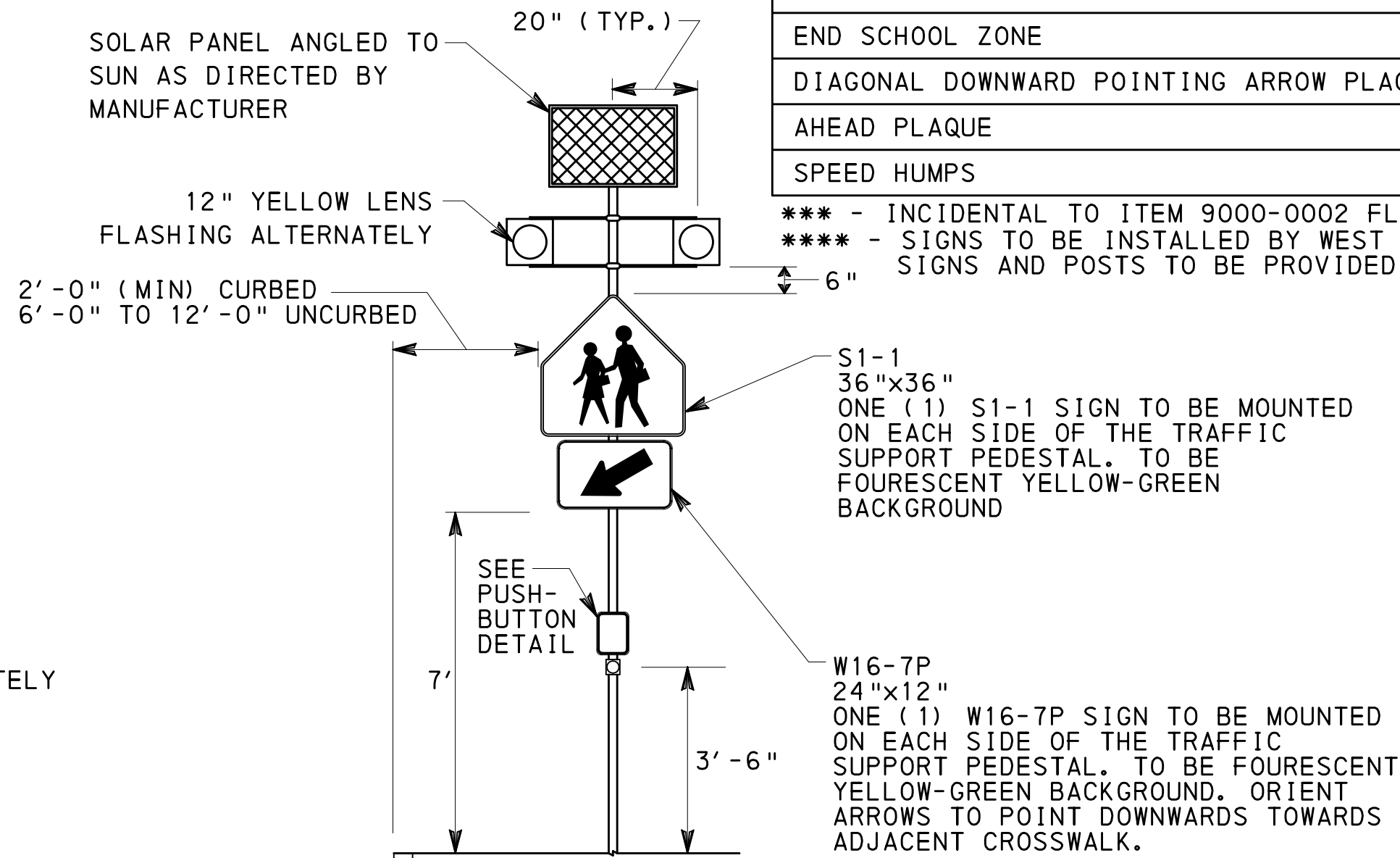
PAVEMENT MARKINGS & DELINEATION

ITEM NUMBER	DESCRIPTION	UNIT	TOTAL
0901-0320	4" STANDARD PAVEMENT MARKINGS, PAINT & BEADS, YELLOW	LF	2215
0901-0330	4" STANDARD PAVEMENT MARKINGS, PAINT & BEADS, WHITE	LF	1210
0901-0331	6" STANDARD PAVEMENT MARKINGS, PAINT & BEADS, WHITE	LF	375
0937-0323	FLEXIBLE DELINEATOR POST, GROUND MOUNT TYPE GM-1, RED POST WITH WHITE SHEETING	EA	16
0960-0005	6" WHITE HOT THERMOPLASTIC MARKINGS	LF	350
0960-0011	12" WHITE HOT THERMOPLASTIC MARKINGS	LF	216
0960-0021	24" WHITE HOT THERMOPLASTIC MARKINGS	LF	425
0960-0120	WHITE HOT THERMOPLASTIC LEGEND, "SPEED HUMP SYMBOL", 6' - 0" X 6'-0"	EACH	6
0960-0222	WHITE HOT THERMOPLASTIC LEGEND, "RIGHT ARROW", 12' - 0" X 3' - 0"	EACH	2
0960-0224	WHITE HOT THERMOPLASTIC LEGEND, "LEFT ARROW", 12' - 0" X 3' - 0"	EACH	2
0960-0228	WHITE HOT THERMOPLASTIC LEGEND, "THRU AND LEFT ARROW", 20' - 0" X 3' - 7"	EACH	1
0962-1000	4" WHITE WATERBORNE PAVEMENT MARKINGS	LF	1210
0962-1001	6" WHITE WATERBORNE PAVEMENT MARKINGS	LF	375
0962-1005	4" YELLOW WATERBORNE PAVEMENT MARKINGS	SF	2215
0963-0001	PAVEMENT MARKING REMOVAL	SF	2275



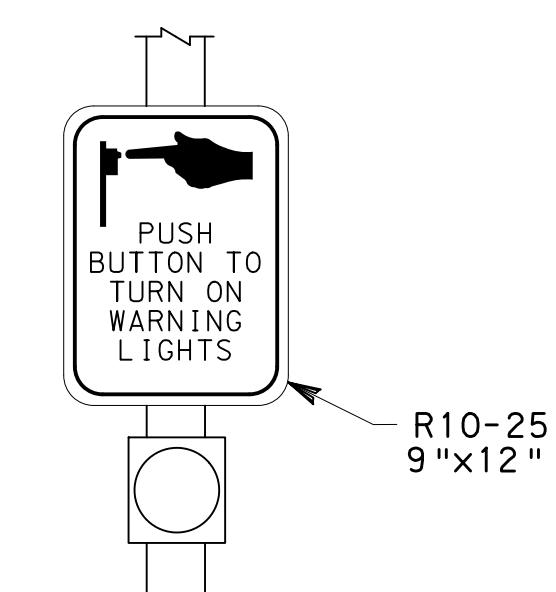
ITEM NO. 0936-0410
SCHOOL ZONE SPEED LIMIT
FLASHING WARNING SIGN DETAIL

N. T. S.
 SEE SCHOOL ZONE SPEED LIMIT
 FLASHING WARNING SIGN OPERATION NOTES
 ON SHEET 12 OF 16



ITEM NO. 9000-0002
FLASHING WARNING SIGN
(SCHOOL CROSSING SYSTEM) DETAIL

N. T. S.
 SEE FLASHING WARNING SIGN
 (SCHOOL CROSSING SYSTEM) OPERATION NOTES
 ON SHEET 12 OF 16



PUSHBUTTON DETAIL
 N. T. S.

9000 0004 EACH	REMOVE EXISTING FLASHING WARNING ASSEMBLY (EXISTING SUPPORT POLE AND FOUNDATION TO REMAIN)	1	13	ALTERNATE 2
----------------------	--	---	----	-------------

MISCELLANEOUS

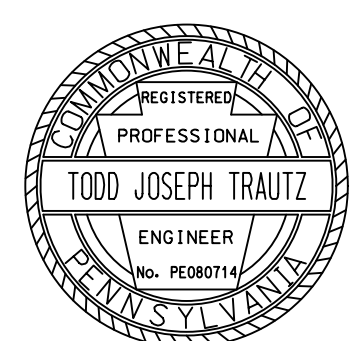
ITEM NO.	DESCRIPTION	QUANTITY	LOCATION	REMARKS
0936 0410 EACH	SCHOOL ZONE SPEED LIMIT FLASHING WARNING SIGN (TYPE I)	5	6, 7, 8, 11, 12	SEE ITEM NO. 9000-0009 FOR FWS NETWORK CONTROL SYSTEM.
0936 0410 EACH	SCHOOL ZONE SPEED LIMIT FLASHING WARNING SIGN (TYPE I)	2	5, 13	ALTERNATE 2 - SEE ITEM NO. 9000-0009 FOR FWS NETWORK CONTROL SYSTEM.
9000 0001 EACH	REMOVAL OF EXISTING FLASHING WARNING ASSEMBLY	1		SEE PLAN SHEETS FOR EXISTING FWD LOCATIONS.
9000 0001 EACH	REMOVAL OF EXISTING FLASHING WARNING ASSEMBLY	1		ALTERNATE 2 LOCATED: STA 33+38, STA 127+47
9000 0002 EACH	FLASHING WARNING SIGN (SCHOOL CROSSING SYSTEM)	1	9, 10	
9000 0009 LS	FLASHING WARNING SIGN NETWORK CONTROL SYSTEM	1		

♦ - SEE SPECIAL PROVISIONS

SIGNS

DESCRIPTION	SIZE W x H	SERIES DESIGNATION	SQ FOOT EACH	TYPE B 0931-0001		TYPE F 0935-0001		STRUC MTD 0936-0200		TYPE B REMOVAL 0971-0001		TYPE F REMOVAL 0975-0001	
				QUAN	TOTAL SF	QUAN	TOTAL SF	QUAN	TOTAL SF	QUANTITY	QUANTITY		
STOP	30"x30"	R1-1	6.3	1	6.3							1	
SPEED LIMIT (15 MPH)	24"x30"	R2-1	5.0					7	35.0				
SPEED LIMIT (35 MPH)****	24"x30"	R2-1	5.0	6	30.0								
RIGHT LANE MUST TURN RIGHT	30"x30"	R3-7R	6.3										1
LANE USE CONTROL (TWO LANES)	30"x30"	R3-8A (LS-R)	6.3	1	6.3								
LANE USE CONTROL (TWO LANES)	30"x30"	R3-8A (L-SR)	6.3	1	6.3								
LANE USE CONTROL (THREE LANES)	48"x30"	R3-8B (L-S-R)	10.0	1	10.0								
PUSH BUTTON TO TURN ON WARNING LIGHTS	9"x12"	R10-12	0.8					2	***				
SCHOOL	36"x36"	S1-1	9.0	2	18.0			4	***				
SCHOOL	30"x30"	S1-1	6.3	4	25.2							1	
SCHOOL (PANEL)	24"x8"	S4-3P	1.3			4	5.2	7	9.1				
WHEN FLASHING	24"x10"	S4-4P	1.7					7	11.9				
END SCHOOL ZONE	24"x30"	S5-2	5.0	3	15.0							2	
DIAGONAL DOWNWARD POINTING ARROW PLAQUE	24"x12"	W16-7P	2.0					4	***				
AHEAD PLAQUE	24"x12"	W16-9P	2.0			2	10.0						
SPEED HUMPS	30"x30"	W17-1 (MOD)	6.3	2	12.6								
TOTAL					134.7		15.2		56.0			5	1

**** - INCIDENTAL TO ITEM 9000-0002 FLASHING WARNING SIGN (SCHOOL CROSSING SYSTEM)
 ***** - SIGNS TO BE INSTALLED BY WEST PENNSBORO TOWNSHIP, SIGNS AND POSTS TO BE PROVIDED BY CONTRACTOR.



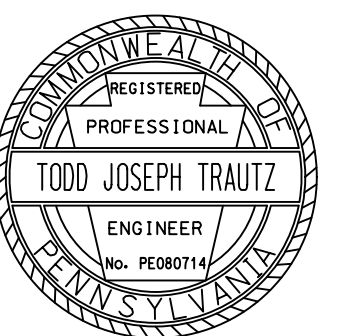
DISTRICT	COUNTY	ROUTE	SECTION	SHEET
	CUMBERLAND			12 OF 16
WEST PENNSBORO TOWNSHIP				
REVISION NUMBER	REVISIONS			DATE BY

**SCHOOL ZONE SPEED LIMIT
FLASHING WARNING SIGN
OPERATION NOTES:**

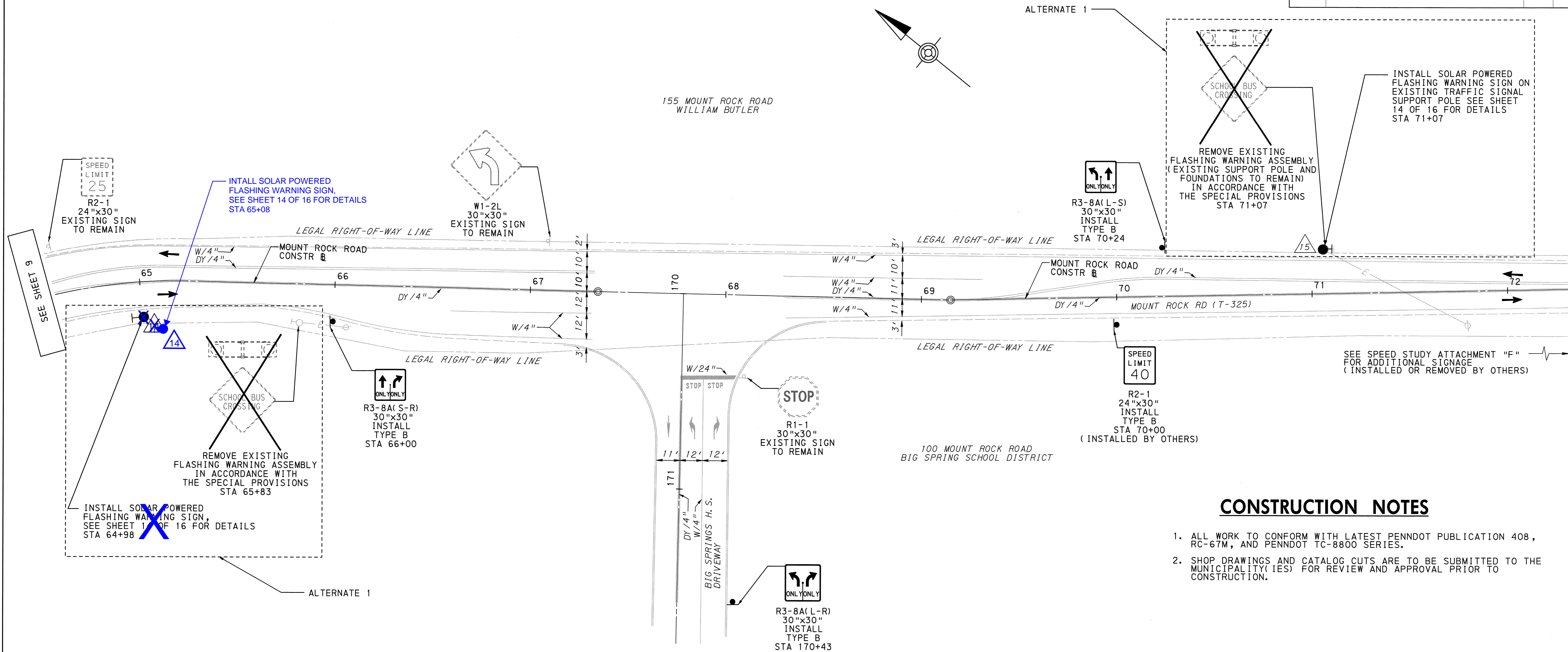
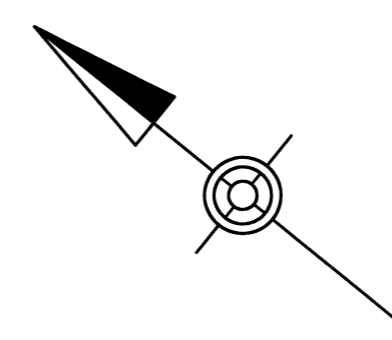
1. BEACONS SHALL BE FLASHED AT A RATE OF NOT LESS THAN 50 OR MORE THAN 60 TIMES PER MINUTE.
2. THE ILLUMINATED PERIOD OF EACH FLASH SHALL BE A MINIMUM OF 1/2 AND A MAXIMUM OF 2/3 OF THE TOTAL CYCLE.
3. FWD SHALL DISPLAY TWO ALTERNATELY FLASHING YELLOW BEACONS DURING PERIODS OF OPERATION AND REMAIN DARK AT ALL OTHER TIMES.
4. PERIODS OF OPERATION ARE:
MONDAY-FRIDAY, DURING SCHOOL DAYS
7: 05 TO 7: 35AM
8: 50 TO 9: 20AM
2: 35 TO 3: 05PM
3: 40 TO 4: 10PM

**FLASHING WARNING SIGN
(SCHOOL CROSSING SYSTEM)
OPERATION NOTES:**

1. THE FLASHING WARNING SIGNS SHALL BE NORMALLY DARK, SHALL INITIATE OPERATION ONLY UPON PEDESTRIAN ACTUATION, AND SHALL CEASE OPERATION 30 SECONDS AFTER THE PEDESTRIAN ACTUATION. THE TIMER SHALL BE RESET UPON EACH NUEW PUSH BUTTON ACTIVATION.
2. THE FLASHING WARNING SIGN ON BOTH SIDES OF THE STREET SHALL, WHEN ACTIVATED, SIMULTANEOUSLY COMMENCE OPERATION OF THEIR ALTERNATING FLASHING INDICATIONS AND SHALL CEASE OPERATION SIMULTANEOUSLY.
3. WHEN ACTIVATED, THE TWO YELLOW INDICATIONS SHALL FLASH IN ALTERNATING "WIG-WAG" FLASHING SEQUENCE (LEFT LIGHT ON, THEN RIGHT LIGHT ON).
4. YELLOW INDICATIONS SHALL BE FLASHED AT A RATE OF NOT LESS THAN 50 OR MORE THAN 60 TIMES PER MINUTE.
5. THE ILLUMINATED PERIOD OF EACH FLASH SHALL BE A MINIMUM OF 1/2 AND A MAXIMUM OF 2/3 OF THE TOTAL CYCLE.



DISTRICT	COUNTY	ROUTE	SECTION	SHEET	
	CUMBERLAND			13 OF 16	
WEST PENNSBORO TOWNSHIP					
REVISION NUMBER	REVISIONS			DATE	BY
2	POLE LOCATION(S) AND NOTES			11/12/18	TJT



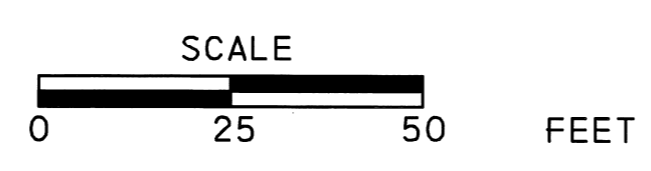
CONSTRUCTION NOTES

1. ALL WORK TO CONFORM WITH LATEST PENNDOT PUBLICATION 408, RC-67M, AND PENNDOT TC-8800 SERIES.
2. SHOP DRAWINGS AND CATALOG CUTS ARE TO BE SUBMITTED TO THE MUNICIPALITY(IES) FOR REVIEW AND APPROVAL PRIOR TO CONSTRUCTION.

LEGEND

- EXISTING SIGN
- PROPOSED SIGN
- EXISTING UTILITY POLE
- EXISTING FLASHING WARNING DEVICE
- PROPOSED TRAFFIC SIGNAL SUPPORT PEDESTAL/ IDENTIFYING NUMBER
- EXISTING ELECTRIC LINE
- DIRECTION OF TRAVEL
- EXISTING DOUBLE YELLOW LINE/WIDTH
- EXISTING WHITE LINE/WIDTH

BIG SPRING HIGH SCHOOL



PLANS PREPARED BY:

Michael Baker INTERNATIONAL

TODD JOSEPH TRAUTZ
ENGINEER
No. PE000714
PENNSYLVANIA

4431 NORTH FRONT STREET
SECOND FLOOR
HARRISBURG, PA 17110-1778

Todd Joseph Trautz 2/19/18
TRAFFIC PROJECT MANAGER DATE
REGISTERED PROFESSIONAL ENGINEER

18-EEB-0918 1A-01

DISTRICT	COUNTY	ROUTE	SECTION	SHEET	
	CUMBERLAND			14 OF 16	
WEST PENNSBORO TOWNSHIP					
REVISION NUMBER	REVISIONS			DATE	BY
2	POLE LOCATION(S) AND NOTES			11/12/18	TJT

TRAFFIC SIGNAL SUPPORTS

STRUCTURE NO.	ITEM NO.	DESCRIPTION	QUANTITY	ROUTE	STATION	SIDE	OFFSET	PEDESTAL			REMARKS
								SHAFT	SIGNALS		
								H	M	N	
14	0951 4014 EACH	TRAFFIC SIGNAL SUPPORT, 14' PEDESTAL	1	MT ROCK RD	65+08 64+99	RT	*	14'	*	N/A	ALTERNATE 1, LOCATE OUTSIDE OF SWALE

* - SEE FLASHING WARNING SIGN DETAIL

MISCELLANEOUS

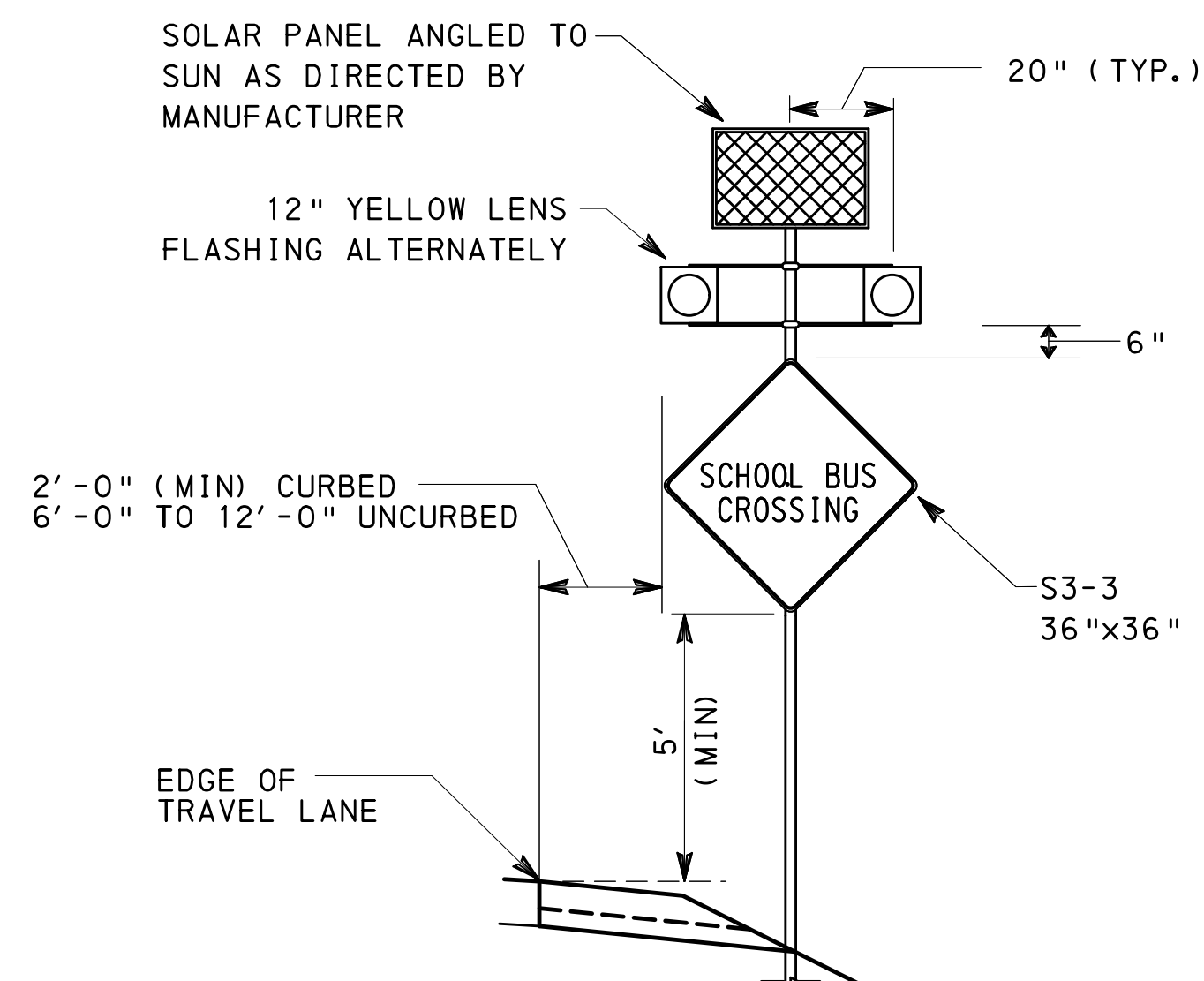
ITEM NO.	DESCRIPTION	QUANTITY	LOCATION	REMARKS
UNIT				
0936 0400 EACH	FLASHING WARNING SIGN	2	14 15	ALTERNATE 1 - SEE ITEM NO. 9000-0009 FOR FWS NETWORK CONTROL SYSTEM.
9000 0001 EACH	REMOVAL OF EXISTING FLASHING WARNING ASSEMBLY	1		ALTERNATE 1 LOCATED: STA 65+83
9000 0004 EACH	REMOVE EXISTING FLASHING WARNING ASSEMBLY (EXISTING SUPPORT POLE AND FOUNDATIONS TO REMAIN)	1	15	ALTERNATE 1

◆ - SEE SPECIAL PROVISIONS

SIGNS

SIGNS				TYPE B 0931-0001		STRUC MTD 0936-0200	
DESCRIPTION	SIZE W x H	SERIES DESIGNATION	SQ FOOT EACH	QUAN	TOTAL SF	QUAN	TOTAL SF
SPEED LIMIT (40 MPH) **	24"x30"	R2-1	5.0	3	15		
LANE USE CONTROL (TWO LANES)	30"x30"	R3-8A (L-R)	6.3	1	6.3		
LANE USE CONTROL (TWO LANES)	30"x30"	R3-8A (L-S)	6.3	1	6.3		
LANE USE CONTROL (TWO LANES)	30"x30"	R3-8A (S-R)	6.3	1	6.3		
SPEED REDUCTION SIGN (25 MPH) **	36"x36"	W3-5	9.0	1	9.0		
SCHOOL BUS CROSSING	36"x36"	S3-3	9.0			2	18.0
				TOTAL	42.9		18.0

** - SIGNS TO BE INSTALLED OR REMOVED BY WEST PENNSBORO TOWNSHIP, SIGNS AND POSTS TO BE PROVIDED BY CONTRACTOR.

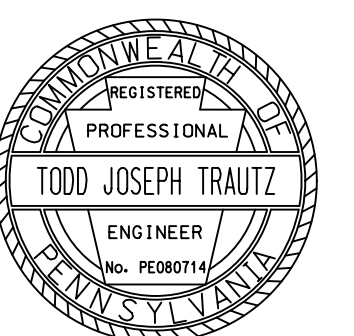


ITEM NO. 0936-0400 FLASHING WARNING SIGN DETAIL

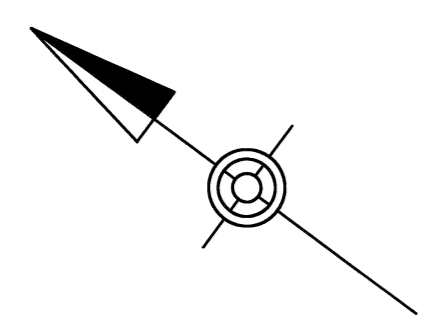
N. T. S.
SEE OPERATION NOTES FOR FLASH INFORMATION

OPERATION NOTES:

1. BEACONS SHALL BE FLASHED AT A RATE OF NOT LESS THAN 50 OR MORE THAN 60 TIMES PER MINUTE.
2. THE ILLUMINATED PERIOD OF EACH FLASH SHALL BE A MINIMUM OF 1/2 AND A MAXIMUM OF 2/3 OF THE TOTAL CYCLE.
3. FWD SHALL DISPLAY TWO ALTERNATELY FLASHING YELLOW BEACONS DURING PERIODS OF OPERATION AND REMAIN DARK AT ALL OTHER TIMES.
4. PERIODS OF OPERATION ARE:
MONDAY-FRIDAY, DURING SCHOOL DAYS
7:00 TO 7:45AM
2:30 TO 3:15PM

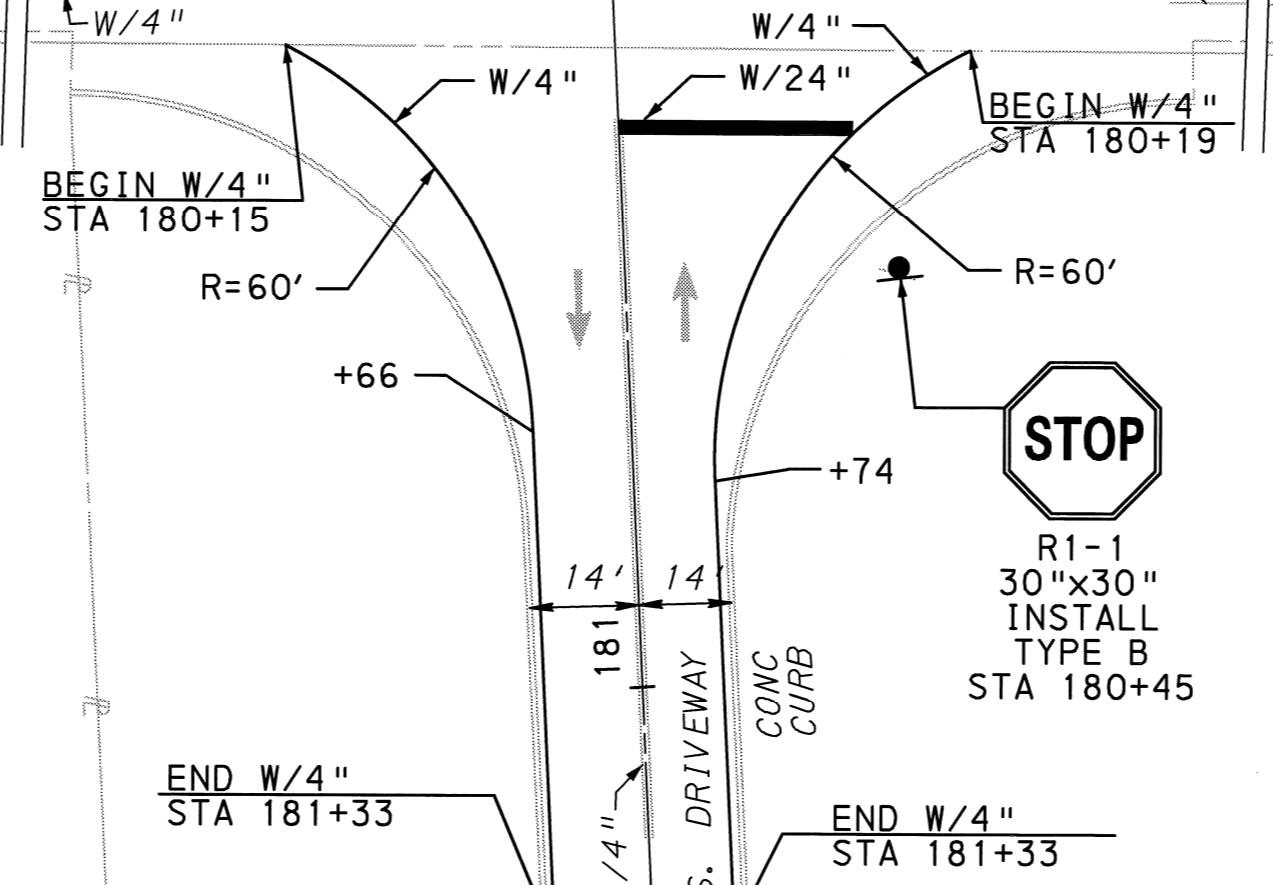
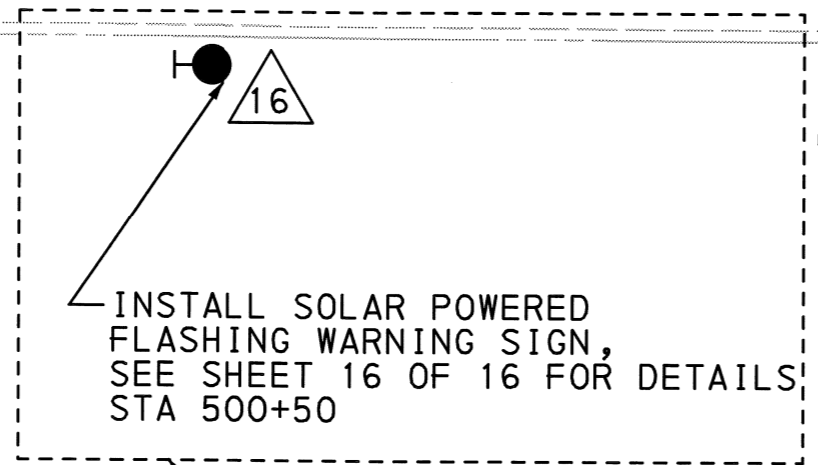
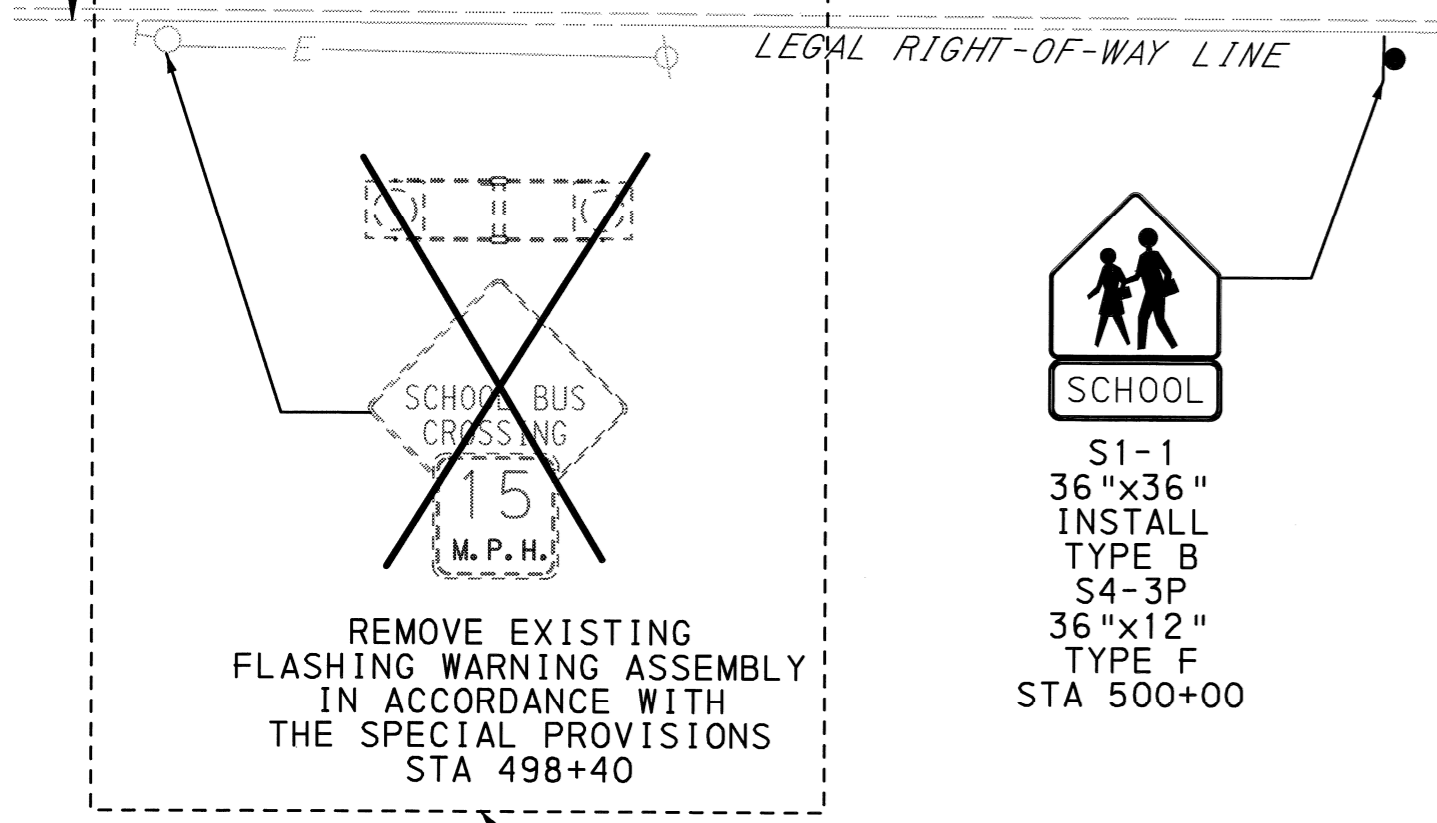
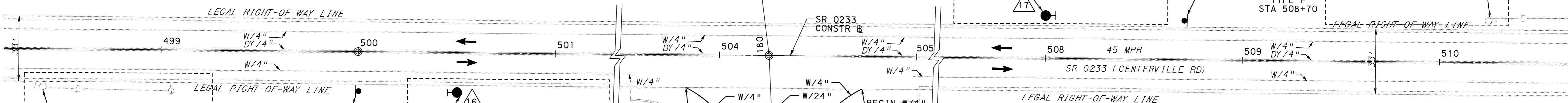
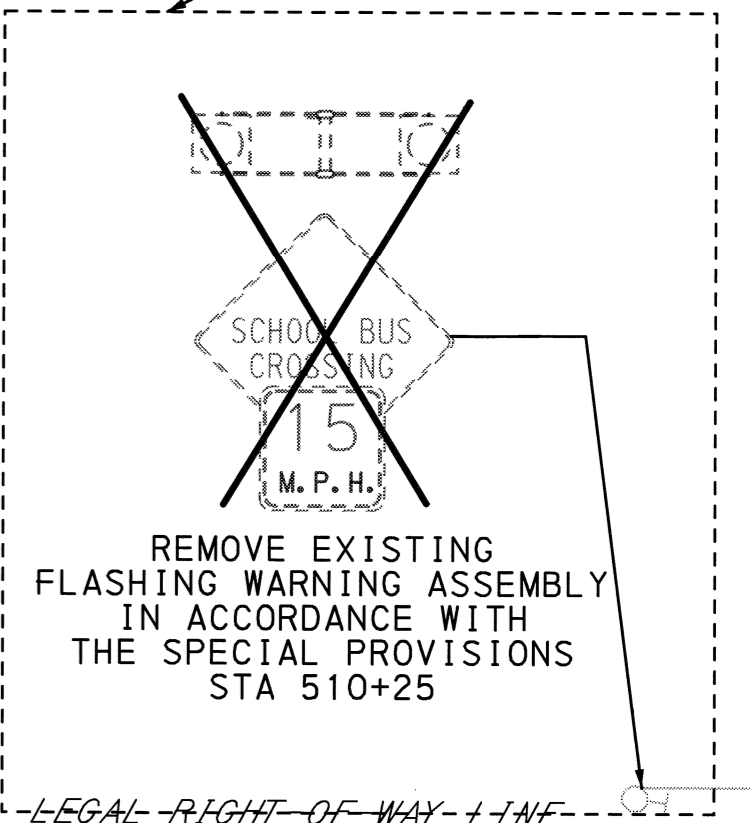
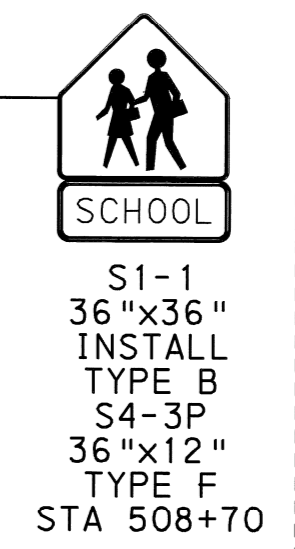
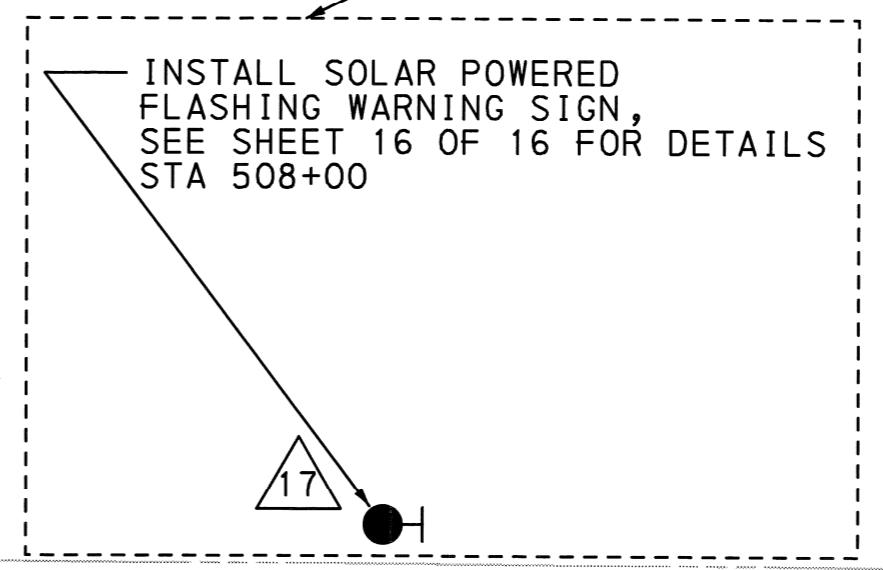


DISTRICT	COUNTY	ROUTE	SECTION	SHEET
	CUMBERLAND			15 OF 16
WEST PENNSBORO TOWNSHIP				
REVISION NUMBER	REVISIONS	DATE	BY	



333 CENTERVILLE ROAD
MICKEY, JENNIE & WINFRED ROCKEY

ALTERNATE 1



334 CENTERVILLE ROAD
BIG SPRING SCHOOL DISTRICT

CONSTRUCTION NOTES

1. ALL WORK TO CONFORM WITH LATEST PENNDOT PUBLICATION 408, RC-67M, AND PENNDOT TC-8800 SERIES.
2. SHOP DRAWINGS AND CATALOG CUTS ARE TO BE SUBMITTED TO THE MUNICIPALITY(IES) FOR REVIEW AND APPROVAL PRIOR TO CONSTRUCTION.

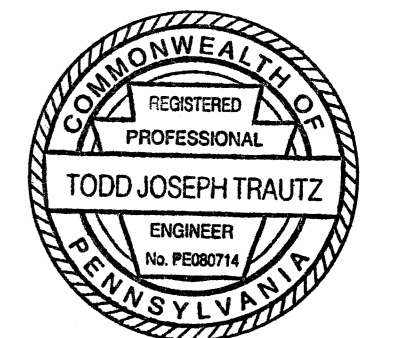
LEGEND

- EXISTING SIGN
- PROPOSED SIGN
- EXISTING UTILITY POLE
- EXISTING FLASHING WARNING DEVICE
- PROPOSED TRAFFIC SIGNAL SUPPORT PEDESTAL/ IDENTIFYING NUMBER
- EXISTING ELECTRIC LINE
- DIRECTION OF TRAVEL
- EXISTING DOUBLE YELLOW LINE/WIDTH
- EXISTING WHITE LINE/WIDTH
- PROPOSED WHITE LINE/WIDTH

OAK FLAT ELEMENTARY SCHOOL

PLANS PREPARED BY:

Michael Baker INTERNATIONAL



4431 NORTH FRONT STREET
SECOND FLOOR
HARRISBURG, PA 17110-1778

Todd Joseph Trautz 2/19/18
TRAFFIC PROJECT MANAGER DATE
REGISTERED PROFESSIONAL ENGINEER

10-LEED-2018 1A-191

DISTRICT	COUNTY	ROUTE	SECTION	SHEET	
	CUMBERLAND			16 OF 16	
WEST PENNSBORO TOWNSHIP					
REVISION NUMBER	REVISIONS			DATE	BY

TRAFFIC SIGNAL SUPPORTS

STRUCTURE NO.	ITEM NO. UNIT	DESCRIPTION	QUANTITY	ROUTE	STATION	SIDE	OFFSET	PEDESTAL			REMARKS
								SHAFT	SIGNALS		
									H	M	
16	0951 4014 EACH	TRAFFIC SIGNAL SUPPORT, 14' PEDESTAL	1	SR 0233	500+50	RT	*	14'	*	N/A	ALTERNATE 1
17	0951 4014 EACH	TRAFFIC SIGNAL SUPPORT, 14' PEDESTAL	1	SR 0233	508+00	LT	*	14'	*	N/A	ALTERNATE 1

* - SEE FLASHING WARNING SIGN DETAIL

MISCELLANEOUS

ITEM NO. UNIT	DESCRIPTION	QUANTITY	LOCATION	REMARKS
0936 0400 EACH	FLASHING WARNING SIGN	2	16 17	ALTERNATE 1 - SEE ITEM NO. 9000-0009 FOR FWS NETWORK CONTROL SYSTEM.
9000 0001 EACH	REMOVAL OF EXISTING FLASHING WARNING ASSEMBLY	2		ALTERNATE 1 LOCATED: STA 498+40 STA 510+25

◆ - SEE SPECIAL PROVISIONS

SIGNS

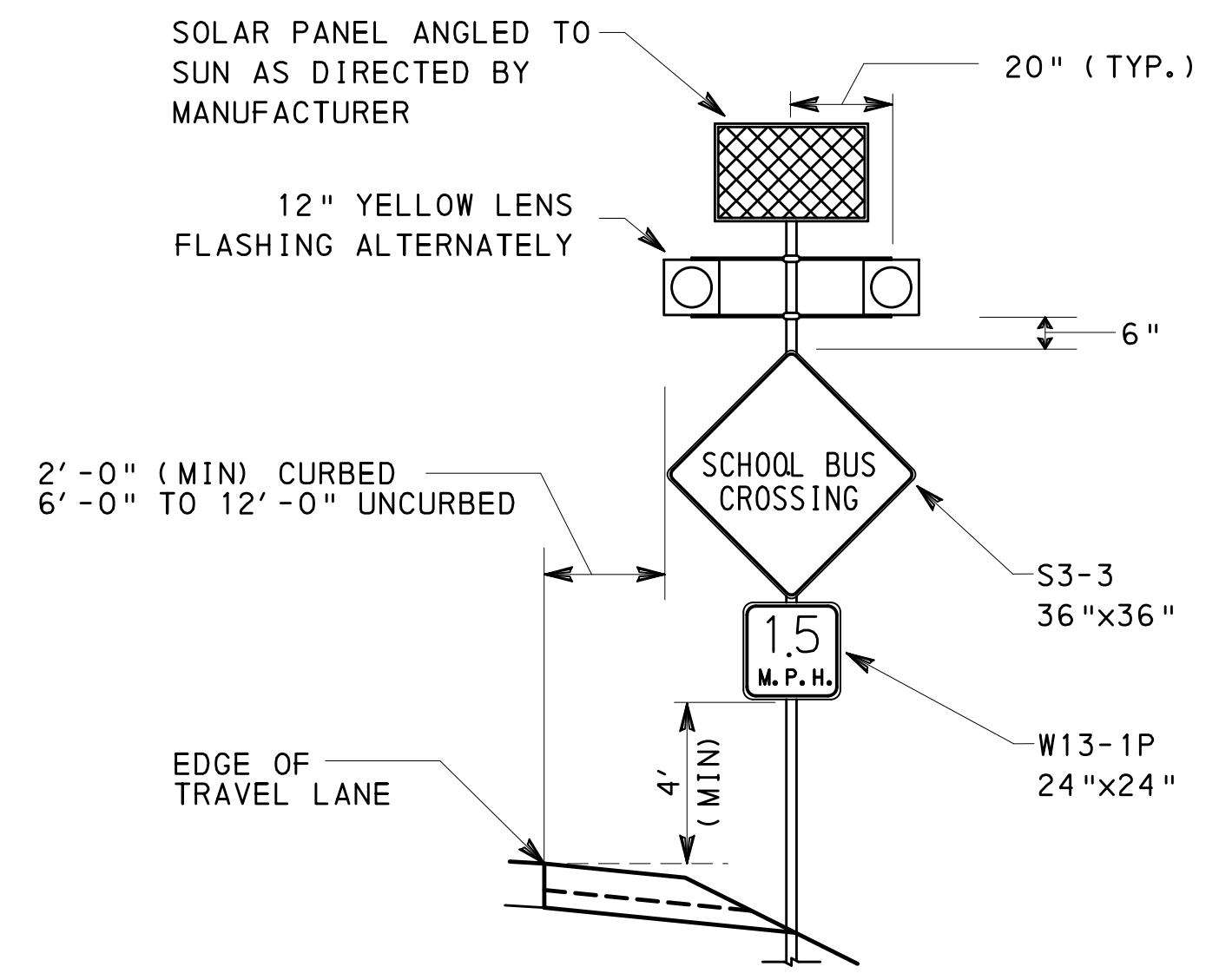
DESCRIPTION	SIZE W x H	SERIES DESIGNATION	SQ FOOT EACH	TYPE B 0931-0001		TYPE F 0935-0001		STRUC MTD 0936-0200	
				QUAN	TOTAL SF	QUAN	TOTAL SF	QUAN	TOTAL SF
SCHOOL	36"x36"	S1-1	9.0	2.0	18.0				
SCHOOL BUS CROSSING	36"x36"	S3-3	9.0					2	18.0
SCHOOL (PANEL)	24"x8"	S4-3P	1.3			2	2.6		
ADVISORY SPEED PLAQUE (15 MPH)	24"x24"	W13-1P	4.0					2	8.0
TOTAL					18.0		2.6		26.0

PAVEMENT MARKINGS

ITEM NUMBER	DESCRIPTION	UNIT	TOTAL
0901-0330	4" STANDARD PAVEMENT MARKINGS, PAINT & BEADS, WHITE	LF	275
0960-0021	24" WHITE HOT THERMOPLASTIC MARKINGS	LF	30
0962-1000	4" WHITE WATERBORNE PAVEMENT MARKINGS	LF	275
0963-0001	PAVEMENT MARKING REMOVAL	SF	31

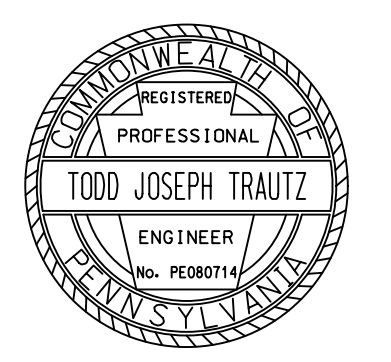
OPERATION NOTES:

- BEACONS SHALL BE FLASHED AT A RATE OF NOT LESS THAN 50 OR MORE THAN 60 TIMES PER MINUTE.
- THE ILLUMINATED PERIOD OF EACH FLASH SHALL BE A MINIMUM OF 1/2 AND A MAXIMUM OF 2/3 OF THE TOTAL CYCLE.
- FWD SHALL DISPLAY TWO ALTERNATELY FLASHING YELLOW BEACONS DURING PERIODS OF OPERATION AND REMAIN DARK AT ALL OTHER TIMES.
- PERIODS OF OPERATION ARE:
MONDAY-FRIDAY, DURING SCHOOL DAYS
8:45 TO 9:30AM
3:30 TO 4:00PM



ITEM NO. 0936-0400 FLASHING WARNING SIGN DETAIL

N. T. S.
SEE OPERATION NOTES FOR FLASH INFORMATION



G:\Projects\01HER\Bfg_Spr\ng_School_District\200_Deliverables\Traffic\Traffic_Signals_Construction_Plan\04_16_08\k1at_Elementary_qtys.dgn 19-FEB-2018 14:21